

# BUNJIL & PALIYANG

by Amos Roach, William Vyvyan Murray and  
the Murrandaya Yepengna Dance Troupe

Presented by Darebin Arts Speakeasy, as part of FUSE Festival

## Social Script



**Image credit:** Darren Gill

**Image description:** Two men and a woman stand side by side. The woman, on the left, wears a long-sleeved black dress, long earrings and white ochre on her face. She stretches her hands out to the side. The man in the middle wears white ochre on his face and a red long-sleeved shirt. He blows into a didgeridoo and holds a clapping stick in his left hand. The man on the right wears a brown long-sleeved shirt and plays a viola.

## Table of Contents

Table of Contents.....	2
<b>Where .....</b>	<b>3</b>
<b>Access Services .....</b>	<b>3</b>
Audience Experience.....	4
<b>Entry to the Performance Space .....</b>	<b>4</b>
<b>The Venue .....</b>	<b>5</b>
Front Entrance .....	5
Accessible Entrance .....	6
Box Office .....	7
Ushers.....	7
Bar .....	8
Toilets.....	9
<b>Performance Space .....</b>	<b>9</b>
<b>Getting to Northcote Town Hall Arts Centre .....</b>	<b>10</b>
Public Transport Information .....	10
For help planning your tram, train or bus trip use the PTV journey planner. ....	10
By Tram .....	10
By Train.....	11
By Bus.....	11
By Car .....	11
Bike or foot .....	12

**Where**

Northcote Town Hall Arts Centre  
189 High Street, Northcote Victoria 3070

**When**

Saturday 13 September, 7:30pm  
Sunday 14 September, 5pm  
Saturday 20 September, 7.30pm  
Sunday 21 September, 5pm

Duration: 50mins, no interval

Please note that a 20-minute Smoking Ceremony will take place outside in the Northcote Town Hall Art Centre's Civic Square before the performance on 13 September, and at the conclusion of the performance on 21 September. This will increase the running time to 70mins on these performance dates only.

**Access Services**

For more information or to let us know about your access needs, email the ticketing team: [Ticketing@darebin.vic.gov.au](mailto:Ticketing@darebin.vic.gov.au)



The performance is wheelchair accessible.



Northcote Town Hall Arts Centre has accessible toilets on site.



You can book your complimentary companion ticket online or over the phone when purchasing tickets to any show. Contact our box office team for more information.

### Audience Experience

A Smoking Ceremony will take place before the performance on **13 September** and at the conclusion of the performance on **21 September**. The Ceremony will take place outside in the Northcote Town Hall Arts Centre's Civic Square. Front of house staff will direct people out the main entrance door to the Civic Square at the commencement of the Ceremony.



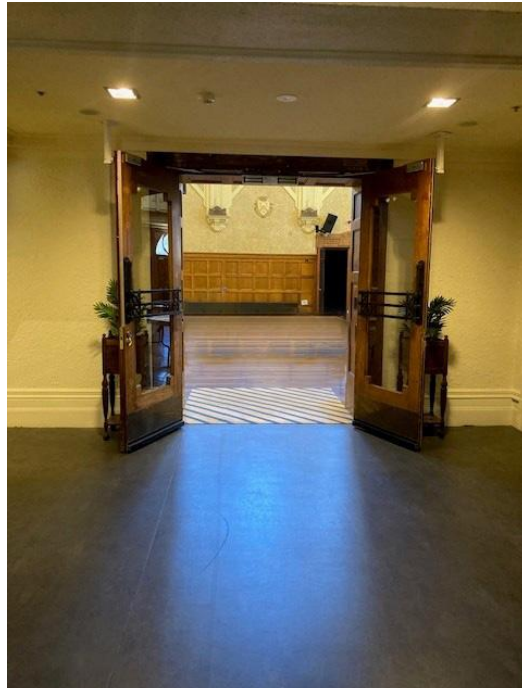
**Image:** Northcote Town Hall Arts Centre's Civic Square from High Street. The main entrance to the building is the glass door frame on the right.

### Entry to the Performance Space

The audience will enter the Main Hall from the doors in the foyer.

Audiences will be allowed to sit wherever they prefer on the seating bank.

The Main Hall doors will close at the performance start time.



**Image:** The entrance into the Main Hall at Northcote Town Hall Arts Centre.

## The Venue



Image: Northcote Town Hall Arts Centre as seen from High St, Northcote



Image: a map of Northcote Town Hall Arts Centre and its surrounding area. **Map**

## Front Entrance

At Northcote Town Hall Arts Centre, the main entrance is up the steps to the side of the building off High St. There are nine steps equipped with grab rails and tactile surface indicators at the top and bottom of each step.



## Accessible Entrance



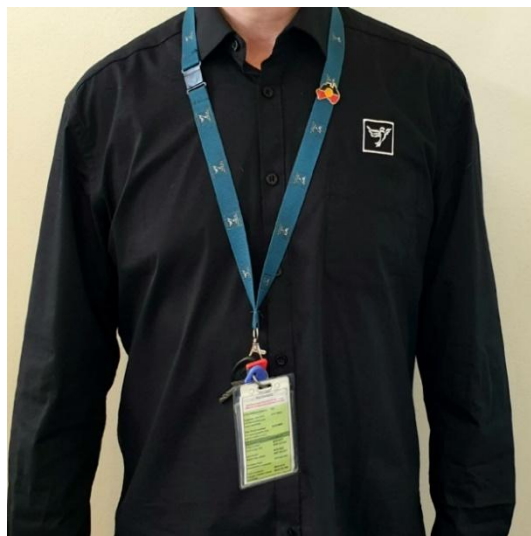
An accessible ramp is located next to the main building entrance. The entrance to the West Wing is one single level.

## Box Office



Once inside, the box office to the right of you. Here, our welcoming front of house staff will be available to provide any assistance you need.

## Ushers



Ushers will be wearing black with a Darebin City Council logo on the left shoulder and a blue lanyard around their neck.

## Bar



Drinks and snacks can be purchased at the bar and taken into the theatre.

There is a lower section of the bar which is wheelchair accessible.

The bar accepts card only, not cash.



## Toilets



Designated toilets are located down the main hall of the West Wing and on the left. All bathrooms have hand dryers with sensory activation.

## Performance Space

When the performers are ready, the ushers will announce that the 'house is open'. They will open the doors to the Main Hall, and you may enter at your own pace.



**Image:** A large art deco hall with seating area in the front.

There is general seating for this event. An Usher can help you find a seat if you would like some help. An Usher will also be able to assist those needing wheelchair access into the Main Hall.

## Getting to Northcote Town Hall Arts Centre

### Public Transport Information

Northcote Town Hall Arts Centre is easily accessible by tram, train, bus, car and bike. Help reduce your environmental impact and rethink your need to drive.

For help planning your tram, train or bus trip use the [PTV journey planner](#).

### By Tram

No. 86 (get off at Stop: #31 - Northcote Town Hall/High St.)



Image Description: Northcote Town Hall Tram Stop #31 (from City)

Accessibility: Level access stop. Tactile ground surface indicator, accessible ramp, lighting,

YarraTrams aims to run every service on Route 86 with a low-floor tram.

To find out if the next tram at your stop will be a low-floor tram, look for the

wheelchair symbol on [tramTRACKER®](#) or call 1300 MY TRAM (1300 698 726)

#### By Train

The nearest station is Merri Station, which is a 10 min walk uphill, from the venue.

#### [Merri Station Information](#)

Or, Northcote Station, which is a 12 min walk from the venue

#### [Northcote Station Information](#)

Or, Westgarth Station, which is a 12 min walk uphill, from the venue or you can catch the No. 86 Tram from Stop: #27 (Westgarth St/High St) on High St up the hill to the venue (Stop: #31 Northcote Town Hall/High St).

#### [Westgarth Station Information](#)

#### By Bus

Route 552 (get off at stop 235 Northcote Plaza, and a further 10-minute walk)

Route 508 (get off at stop 6170 Separation St/High St, and a further 10-minute walk)

Route 567 (get off stop 1036 Mitchell Street/High St, and a further 10-minute walk)

Route 250 and 251 (get off at Westgarth St/High St, and a further 10-minute walk up the hill)

#### By Car

There are two sets of accessible car spaces around the venue: one on James Street, near the corner of High Street, and one on Westbourne Grove, near the corner of High Street.

#### **Parking and Disability Access Parking:**

Limited on-street parking is available on James Street, McIntosh Street and Westbourne Grove.



Bike or foot

Northcote Town Hall Arts Centre is conveniently located along High Street, Northcote, which is ideal for cycling or walking.