

The Voice In My Hands

Scratch Night #1

Presented by Darebin Arts Speakeasy

Social Script



Table of Contents

Where	3
When.....	3
Access Services.....	3
Performers	4
Sensory Elements.....	4
Audience Experience.....	5
Shocks or Surprises	7
Acknowledgement of Country	8
The Venue	9
Accessible Entrance	9
Box Office	10
Ushers	10
Toilets.....	11
Getting to Northcote Town Hall Arts Centre	12
Public Transport Information.....	12

Where

Northcote Town Hall Arts Centre

189 High Street, Northcote Victoria 3070

When
Tuesday, 29th April at 7.00PM

Duration: Approximately 2 hours, including an interval

Access Services

For more information or to let us know about your access needs, email the ticketing team: Ticketing@darebin.vic.gov.au



The venue is wheelchair accessible.



Accessible toilets are available on-site.



You can book your complimentary companion ticket online or over the phone when purchasing tickets to any show. Contact our box office team for more information.

Performers

This event showcases a selection of emerging and established artists. A detailed list of performers will be provided closer to the date or at the event.

Sensory Elements

Sound

- No sudden loud noises or music
- Low-level background audio during interval (TBC)

Lighting

- Standard overhead room lighting
- No strobe, flashing, or theatrical lighting effects

Physical

- General seating (chairs and floor cushions)
- Audiences are welcome to move in and out of the space freely

Smell

- No strong scents, haze, smoke or incense will be used

Visual

- Printed materials will be provided (e.g. note cards, palm cards)
- Visual displays such as pinboards may be present

Audience Experience

Arrival and Entry

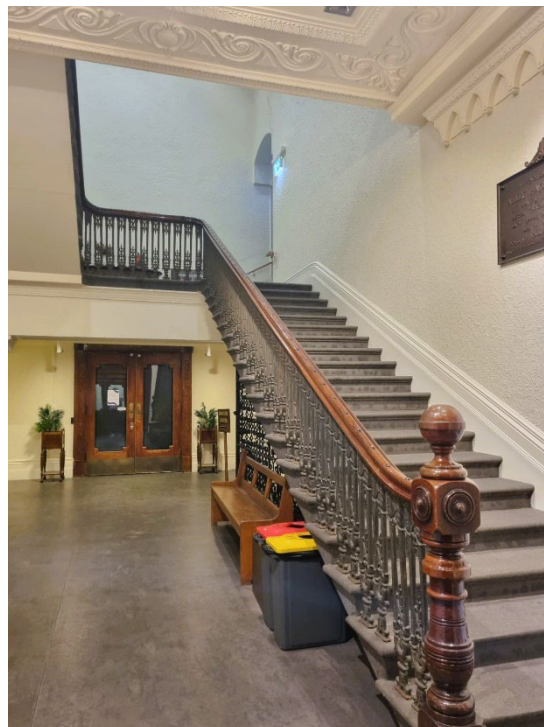
- Entry to Room 2A/B is via the corridor
- Access is available via stairs or lift
- Doors open at 6:30–6:45pm; audience can enter from 6:30pm
- Seating is unallocated; you are welcome to sit wherever you feel most comfortable

Participation and Movement

- Audiences are free to come and go throughout the event
- Latecomers may be asked to wait at the back to avoid disrupting performances
- Ushers will be available to assist with seating and accessibility needs

Getting To Room 2A/B

You can get to room 2A/B via the lift or stairs.



Or the other stairs which are further down the corridor.



Image: The entrance to Room 2A/B in hallway with white doors and a black sign

Entry to the space

The audience will enter Room 2A/B from the corridor.

The performance space will be open 30 minutes prior to start time.

Audiences will be allowed to sit wherever they prefer on the chairs or cushions on the floor. An Usher can help you find a seat if you would like some help.

An Usher will also be able to assist those needing wheelchair access.

Shocks or Surprises

- No loud or sudden sound effects
- No jump scares, strobe lighting or startling moments

Acknowledgement of Country

An Acknowledgement of Country will be delivered by a member of the creative team before the event begins

The Venue



Image: Northcote Town Hall Arts Centre as seen from High St, Northcote

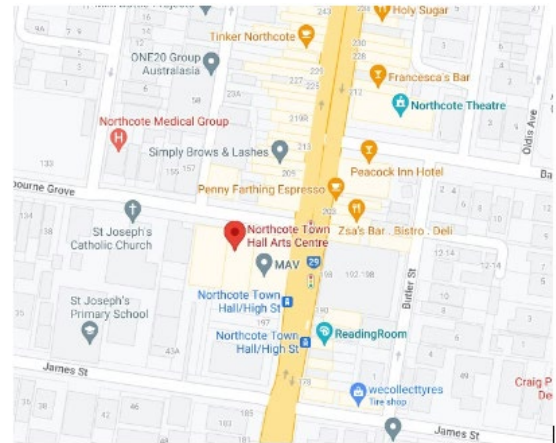


Image: a map of Northcote Town Hall Arts Centre and its surrounding area. [Map](#)

Front Entrance

The main entrance is up nine steps on the High Street side

It is equipped with grab rails and tactile ground surface indicators

Accessible Entrance

- An accessible ramp is located next to the main entrance



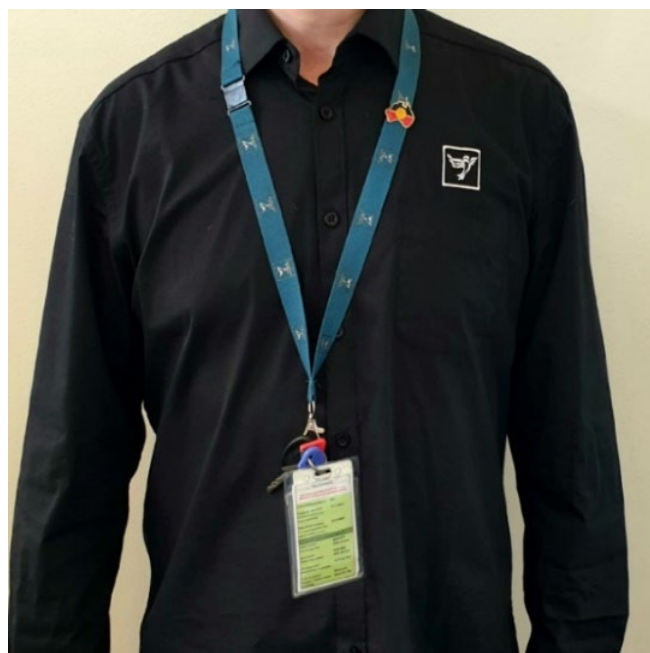
Box Office

The Box Office is located immediately to your right upon entering
Friendly front of house staff are available to assist you



Ushers

Ushers will be wearing black with the Darebin City Council logo and a blue lanyard



Toilets

Toilets are located outside Room 2A/B and are on either side of the lift.



There are more in the corridor in the main entrance near the Box Office.



All toilets have hand dryers with sensory activation.

Getting to Northcote Town Hall Arts Centre

Public Transport Information

Northcote Town Hall Arts Centre is easily accessible by tram, train, bus, car and bike. Help reduce your environmental impact and rethink your need to drive.

For help planning your tram, train or bus trip use the [PTV journey planner](#).

By Tram

No. 86 (get off at Stop: #31 - Northcote Town Hall/High St.)



Image Description: Northcote Town Hall Tram Stop #31 (from City)

Accessibility: Level access stop. Tactile ground surface indicator, accessible ramp, lighting,

YarraTrams aims to run every service on Route 86 with a low-floor tram.

To find out if the next tram at your stop will be a low-floor tram, look for the wheelchair symbol on [tramTRACKER®](#) or call 1300 MY TRAM (1300 698 726)

By Train

The nearest station is Merri Station, which is a 10 min walk uphill, from the venue.

[Merri Station Information](#)

Or, Northcote Station, which is a 12 min walk from the venue

[Northcote Station Information](#)

Or, Westgarth Station, which is a 12 min walk uphill, from the venue or you can catch the No. 86 Tram from Stop: #27 (Westgarth St/High St) on High St up the hill to the venue (Stop: #31 Northcote Town Hall/High St).

[Westgarth Station Information](#)

By Bus

Route 552 (get off at stop 235 Northcote Plaza, and a further 10-minute walk)

Route 508 (get off at stop 6170 Separation St/High St, and a further 10-minute walk)

Route 567 (get off stop 1036 Mitchell Street/High St, and a further 10-minute walk)

Route 250 and 251 (get off at Westgarth St/High St, and a further 10-minute walk up the hill)

By Car

There are two sets of accessible car spaces around the venue: one on James Street, near the corner of High Street, and one on Westbourne Grove, near the corner of High Street.

Parking and Disability Access Parking

Limited on-street parking is available on James Street, McIntosh Street and Westbourne Grove.



Bike or foot

Northcote Town Hall Arts Centre is conveniently located along High Street, Northcote, which is ideal for cycling or walking.