

# THE BLOK!

by A DAYLIGHT CONNECTION

Presented by Darebin Arts Speakeasy & Melbourne Fringe

## Social Script



**Image credit:** Gregory Lorenzutti

**Image description:** Two Aboriginal women wearing long blue robes hold toilet paper rolls and bouquets of flowers in their hands. They stare beyond the camera with stoic facial expressions and stand in front of a blue backdrop.

## Table of Contents

<b>Where</b>	3
<b>Access Services</b>	3
<b>Sensory Elements</b>	4
Sound	4
Lighting	4
Physical –	4
Smell	4
Visual	5
Audience Experience	5
Shocks or surprises –	5
Audience experience	5
Social expectations	6
<b>Performance Expectations</b>	6
Dynamic Lighting	6
Dynamic Sounds and Loud Noises	6
Front Entrance	7
Accessible Entrance	7
Box Office	8
Ushers	9
Bar	9
Toilets	10
<b>Performance Space</b>	11
<b>Getting to Northcote Town Hall Arts Centre</b>	12
Public Transport Information	12
For help planning your tram, train or bus trip use the PTV journey planner.	12
By Tram	12
By Train	13
By Bus	13
By Car	13
Bike or foot	14

**Where**

Northcote Town Hall Arts Centre  
189 High Street, Northcote Victoria 3070

**When**

Wednesday 8 October, 7:30pm (Preview)  
Thursday 9 October, 7:30pm (Opening Night)  
Friday 10 October, 7:30pm  
Saturday 11 October, 2pm  
Saturday 11 October, 7.30pm (Mob Night)  
Wednesday 15 October, 7.30pm (Artist Post-show Talk)  
Thursday 16 October, 7.30pm (Auslan Interpretation)  
Friday 17 October, 7:30pm  
Saturday 18 October, 2pm  
Saturday 18 October, 7:30pm

Duration: 75mins, no interval

**Access Services**

For more information or to let us know about your access needs, email the ticketing team: [Ticketing@darebin.vic.gov.au](mailto:Ticketing@darebin.vic.gov.au)



The performance is wheelchair accessible.



Northcote Town Hall Arts Centre has accessible toilets on site.



You can book your complimentary companion ticket online or over the phone when purchasing tickets to any show. Contact our box office team for more information

**Performers** - There are two performers and one onstage musician



Carly Sheppard



Alexis West



Andrew James

## Sensory Elements

**Content Warnings:** This production contains coarse language, theatrical haze, strobe lighting, and references to suicide, drug use, sexual content, genocide, extinction, and the end of the world.

### Sound

- Live music is performed onstage by Andrew James
- Both live and recorded ambient noise and instrumentation underscores the performance throughout
- Sound effects often respond to actions and dialogue on stage
- Loud and intense sounds, involving dissonant noises and instrumentation is played frequently throughout the show
- A voice from a performer off stage plays throughout the first half of the show.
- Sound utilized covers a broad range of audible spectrum, from very high-pitched whistling to very low-pitched rumbling.

### Lighting

Flashing lights and strobe occur frequently throughout the show, often to signify the passage of time. *This show is not recommended for patrons with epilepsy or sensitivity to strong and intense lighting.*

### Physical –

- There are several physical references depicting self-injury, suicide, violent acts and violence.
- The actors perform acts that mimic the usage of drugs
- A performer sits on a toilet and pretends to defecate

### Smell

Haze is utilized throughout the show and may present a subtle scent.

## Visual

Performers are often wearing nonsensical, outlandishly comedic outfits.

## Audience Experience

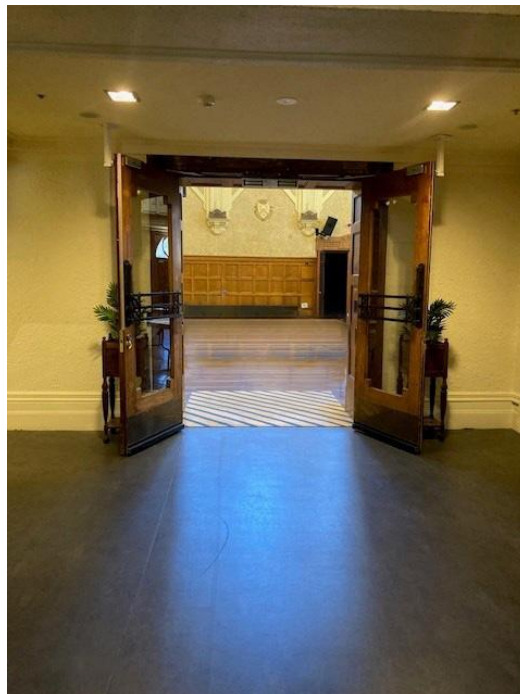
### Entry to Space

The audience will enter the Main Hall from the main doors in the foyer.

The performance space will be open 5 minutes prior to start time.

Audiences will be allowed to sit wherever they prefer on the seating bank.

The Main Hall doors will close at the performance start time.



**Image:** The entrance into the Main Hall at Northcote Town Hall Arts Centre.

### Shocks or surprises –

There are frequent bursts of sound, lighting and action throughout the performance that is intended to shock and/or surprise the audience.

### Audience experience

- At one point during the performance, a performer will crawl on the stage towards the audience to try and grab at the ankles of the patrons in the front row. No audience member will be touched.
- A performer will offer a toilet paper roll to an audience member seated in the front few rows.

## Social expectations

Throughout the performances, the performers will break the fourth wall and refer to them; however, there is no obligation for the audience to respond.

## Performance Expectations

- Music will be playing as the audience enters the performance space.
- A table, chair, throne and an altar will be visible standing on the stage before the performance starts.

## Other

### Dynamic Lighting

Strobe and flash lighting are used throughout, often to signify the passage of time. This show is not recommended for patrons with epilepsy, or those with sensitivity to intense lighting.

### Dynamic Sounds and Loud Noises

- Props are used throughout the show to produce noise.
- Items are frequently thrown across the stage and may bang on the floor.

### High Contrast Image Changes

There are frequent blackouts and strobing that indicate scene changes.

## General Notes

An Acknowledgement of Country will be made by a Darebin staff member before the doors to the Main Hall open.

## Post-Show Artist Talk:

After the **Thursday 15 October 7:30pm performance** there will be an optional **post-show talk** with the artists, on the same stage. There will be a short break between the performance and the talk.

If you do not wish to stay for the post-show talk there is no obligation. You are most welcome to stay or leave.

## The Venue





Image: Northcote Town Hall Arts Centre as seen from High St, Northcote

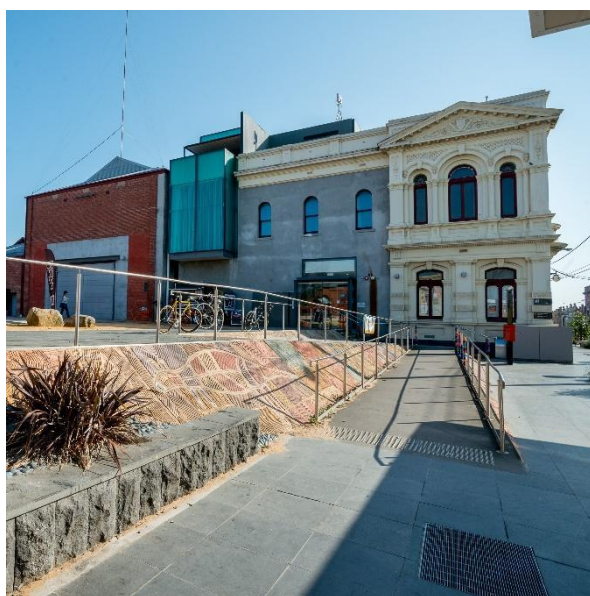


Image: a map of Northcote Town Hall Arts Centre and its surrounding area. Map

## Front Entrance

At Northcote Town Hall Arts Centre, the main entrance is up the steps to the side of the building off High St. There are nine steps equipped with grab rails and tactile surface indicators at the top and bottom of each step.

## Accessible Entrance



An accessible ramp is located next to the main building entrance. The entrance to the West Wing is one single level.

## Box Office



Once inside, the box office to the right of you. Here, our welcoming front of house staff will be available to provide any assistance you need.



## Ushers



Ushers will be wearing black with a Darebin City Council logo on the left shoulder and a blue lanyard around their neck.

## Bar



Drinks and snacks are available for purchase at the bar and can be taken into the theatre. A new permanent bar has been set up, with entry to the right just past the

box office at the main entrance. The bar includes two lower sections that are wheelchair accessible, and it is card only - cash is not accepted.

## Toilets



Designated toilets are located on the left, as you enter the main entrance. There are also bathrooms down the corridor from the foyer in the West Wing.

All bathrooms have hand dryers with sensory activation.

## **Performance Space**

When the performers are ready, the ushers will announce that the 'house is open'.

They will open the doors to the Main Hall, and you may enter at your own pace.



**Image:** A large art deco hall with seating area in the front.

There is general seating for this event. An Usher can help you find a seat if you would like some help. An Usher will also be able to assist those needing wheelchair access into Studio One.

## Getting to Northcote Town Hall Arts Centre

### Public Transport Information

Northcote Town Hall Arts Centre is easily accessible by tram, train, bus, car and bike. Help reduce your environmental impact and rethink your need to drive.

For help planning your tram, train or bus trip use the [PTV journey planner](#).

### By Tram

No. 86 (get off at Stop: #31 - Northcote Town Hall/High St.)



Image Description: Northcote Town Hall Tram Stop #31 (from City)

Accessibility: Level access stop. Tactile ground surface indicator, accessible ramp, lighting,

YarraTrams aims to run every service on Route 86 with a low-floor tram.

To find out if the next tram at your stop will be a low-floor tram, look for the wheelchair symbol on [tramTRACKER®](#) or call 1300 MY TRAM (1300 698 726)

### By Train

The nearest station is Merri Station, which is a 10 min walk uphill, from the venue.

### [Merri Station Information](#)

Or, Northcote Station, which is a 12 min walk from the venue

### [Northcote Station Information](#)

Or, Westgarth Station, which is a 12 min walk uphill, from the venue or you can catch the No. 86 Tram from Stop: #27 (Westgarth St/High St) on High St up the hill to the venue (Stop: #31 Northcote Town Hall/High St).

### [Westgarth Station Information](#)

### By Bus

Route 552 (get off at stop 235 Northcote Plaza, and a further 10-minute walk)

Route 508 (get off at stop 6170 Separation St/High St, and a further 10-minute walk)

Route 567 (get off stop 1036 Mitchell Street/High St, and a further 10-minute walk)

Route 250 and 251 (get off at Westgarth St/High St, and a further 10-minute walk up the hill)

### By Car

There are two sets of accessible car spaces around the venue: one on James Street, near the corner of High Street, and one on Westbourne Grove, near the corner of High Street.

### **Parking and Disability Access Parking:**

Limited on-street parking is available on James Street, McIntosh Street and Westbourne Grove.



Bike or foot

Northcote Town Hall Arts Centre is conveniently located along High Street, Northcote, which is ideal for cycling or walking.