

Axon

by Speak Percussion's Bespoke Artists

Presented by Darebin Arts Speakeasy, as part of FUSE

Social Script



Image credit: Darren Gill

Image description: A person with long dark hair holds a drumhead over a bright light.

Special consideration to this document

These programs have been in development right up to the first curtain of its season. The information provided in this document is created to the best of the production team and producer's knowledge. Any specific production changes that may impact audience sensitivities will be announced at the commencement of each program.

Table of Contents

Special consideration to this document	1
When	3
Access Services	3
Sensory Elements	5
Sound.....	5
Lighting	5
Physical	6
Smell	6
Visual	6
Audience Experience	6
Shocks or surprises	6
Social expectations	6
Performance expectations	6
Other	7
Content Warnings.....	7
Post-Show Reception:	7
The Venue	8
Front Entrance.....	8
Accessible Entrance	9
Box Office	9
Ushers.....	10
Bar.....	10
Toilets	11
Performance Space.....	12
Public Transport Information	13
By Tram.....	13
By Train.....	14
By Bus	14
Bike or foot.....	14
By Car.....	15

Where

Darebin Arts Centre
401 Bell Street, Preston Victoria 3072

When

Friday 20 September – Sunday 22 September 2024
Friday 20 Sept, 7pm (post-show reception)
Saturday 21 Sept, 1pm, 3pm, 5pm and 7pm (post-show reception)
Sunday 22 Sept, 1pm, 3pm and 5pm

Duration: 90mins each program with intervals in between programs
Suitable for all ages; all persons under the age of 18 must be accompanied by an adult

Access Services

For more information or to let us know about your access needs, email the ticketing team:
Ticketing@darebin.vic.gov.au



The performance is wheelchair accessible.



Darebin Arts Centre has accessible toilets on site.



You can book your complimentary companion ticket online or over the phone when purchasing tickets to any show. Contact our box office team for more information.

Performers

There are 4 unique programs across the weekend of performances. Each program features 3 performers.

Program

Friday 20 Sept, 7pm: Axon – White

Saturday 21 Sept 1pm: Axon – White

Saturday 21 Sept, 3pm: Axon – Brown

Saturday 21 Sept, 5pm: Axon – Pink

Saturday 21 Sept, 7pm: Axon – Blue

Sunday 22 Sept, 1pm: Axon – Blue

Sunday 22 Sept, 3pm: Axon – Pink

Sunday 22 Sept, 5pm: Axon – Brown

Axon – White



Image Descriptions: (from left to right) A woman (**Jaslyn Roberston**) with dark hair and a dark shirt sits behind a sound desk; A woman (**Jasmin Wing-Yin Leung**) with dark braided hair leans heavily over a stringed instrument on her lap; A woman (**Bridget Bourne**) with dark hair wears a black top and balances a ceramic bowl on her head. In her hands are two more ceramic bowls.

Axon – Brown

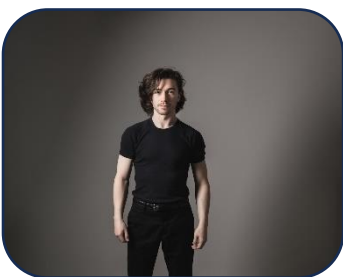


Image Descriptions: (from left to right) A man (**Alexander Meagher**) with dark shaggy hair stands firm in front of a grey backdrop. He wears a black tshirt and black pants; A man (**Callum G'Froerer**) blows into a trumpet. He wears a dark buttoned shirt and is surrounded by nature; A man (**Jesse Vivante**) wears a light jumper and a black beanie hat. The image is in black and white.

Axon – Pink



Image Descriptions: (from left to right) A man (**James Paul**) with dark shaggy hair wears a sleeveless dark top. In the background is a tree; A man (**Andrew Saragossi**) with short dark hair wears a black tshirt. He stands in front a light background; A woman (**Anusha Yellapragada**) with long dark hair wears a buttoned dark shirt. A saxophone is strapped from her neck.

Axon – Blue



Image Descriptions: (from left to right) A man (**Jack Palmer**) with short dark hair wears a dark top. A blue light shines on him; A man (**Oliver 'Ollie' Cox**) with shaggy dark hair wears a black tshirt and dark pants. He behind a drum head and holds a drum stick vertically over the drum head; A woman (**Rachel Lewindon**) with long dark hair wears a dark shirt. She leans on an open piano.

Sensory Elements

Sound

These performances include live acoustic instruments, live amplified instruments with effects, playback recordings and laptop audio.

Lighting

These shows may have changes in lighting states during the performances. To the best of our knowledge there will be no strobe lighting or sudden flashes.

Physical

These shows do not involve audience participation and while it may be an intimate audience number, the performers will not be very close or touch anyone in the audience.

Smell

There may be a small amount of smoke/haze in some of these performances. We will give more exact warnings before any performance that uses smoke/haze.

Visual

Some of these performances include projected video/visuals. Some performances will be a soloist on an instrument or laptop. Some have between 3 and 5 performers on stage. Some performances will be on an elevated stage and others will be on floor level.

Audience Experience

Entry to Space

The audience will enter from the main doors of the foyer.

The performance space will be open 30 minutes prior to start time.

Audiences will move to their allocated seating as designated on their ticket.

The main hall doors will close at the performance start time.

Shocks or surprises

To the best of our knowledge, there will be no loud noises or flash lighting used in any performance

Social expectations

These shows are not lock out performances. A venue staff member will let late comers in at appropriate times.

Performance expectations

Each show will be introduced by a staff member from Speak Percussion. This will include an Acknowledgement of Country and an overview of the artists and performance in that program. There are 3 performances in each program. There may be some rearranging of gear between performances. The

audience will be asked to leave the performance space once the program has ended so that staff can set up the performance space for the next program.

Other

Content Warnings

Axon contains some works with dynamic sound, loud noise, flickering light and high contrast image changes.

Dynamic Lighting

There will be lighting changes during performance of varying amounts and intensities.

Dynamic Sounds and Loud Noises

This will be a dynamic audio experience, including very quiet to loud. The loud sounds will not be at harmful levels, and will not occur suddenly.

High Contrast Image Changes

There may be high contrast image changes in some performances.

General Notes

An Acknowledgement of Country will be spoken at the beginning of every program performance.

Post-Show Reception:

After the **Friday 20 September 7pm** and **Saturday 21 September, 7pm** performances there will be an informal post-show reception. This is a time when the audience can chat with the artists one-on-one.

There will be an announcement made after each performance finishes, stating that the reception will happen.

If you don't wish to stay for the post-show reception you are more than welcome to leave. You can also use the toilet throughout the reception a return to the activities at your own pace.

Light refreshments and beverages will be offered during the reception.

The Venue



Image: Darebin Arts Centre as seen from Bell St, Preston

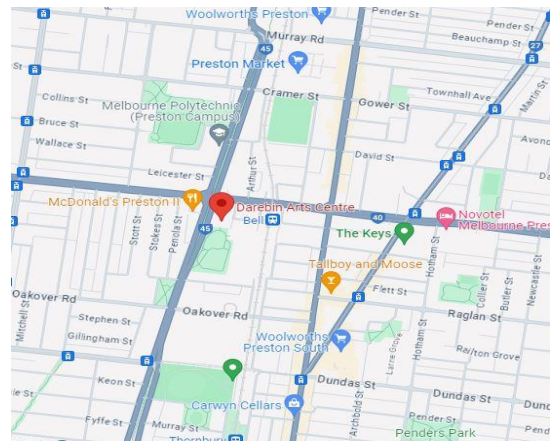


Image: a map of Darebin Arts Centre and its surrounding area [Map](#)

Front Entrance

At Darebin Arts Centre, the main entrance is up the steps from the Darebin Arts Centre carpark.

There are three steps equipped with grab rails and tactile surface indicators at the top and bottom of each step.



This entrance has a set of glass automatic doors leading to an airlock, followed by another set of glass automatic doors that provide entry to the venue. These doors are locked prior to the performance and are opened by Darebin Arts Centre staff 45 minutes before the performance. The

main entrance glass doors to the street will be closed when the performance begins but can always be opened by staff if you need to leave during a performance.

Accessible Entrance



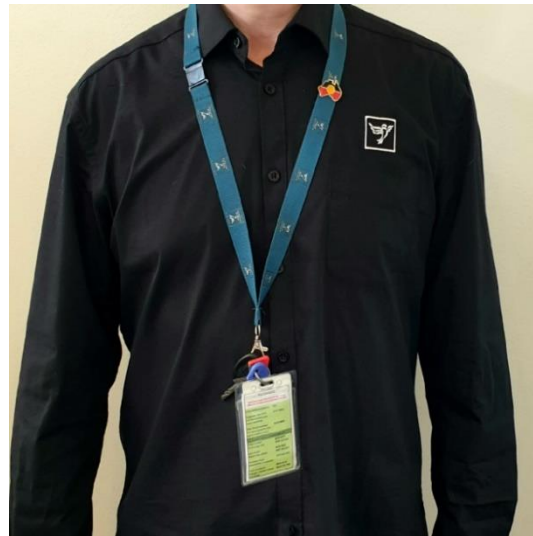
An accessible ramp is found to the far right of the front entrance steps. The accessible ramps leads to the front door glass entrance into the foyer.

Box Office



Once inside, the reception and box office are several metres in front and to the right of you. Here, our welcoming front of house staff will be available to provide any assistance you need.

Ushers



Ushers will be wearing black shirts with a Darebin City Council logo on the left shoulder and a blue lanyard around their neck.

Bar

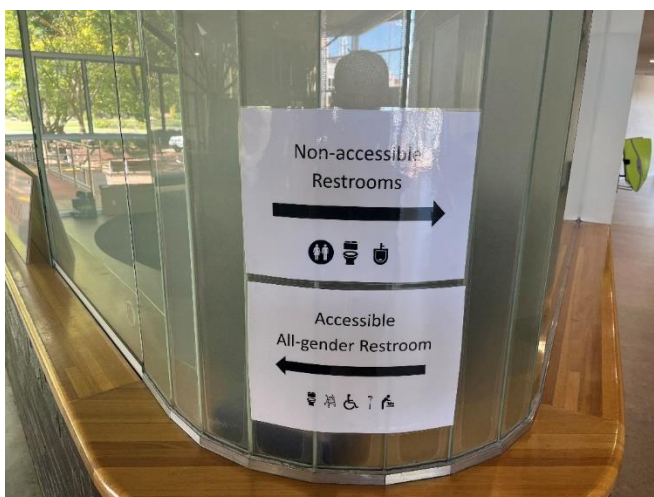


Drinks and snacks can be purchased at the bar and taken into the theatre.

There is a lower section of the bar which is wheelchair accessible.

The bar accepts card only, not cash.

Toilets



You can find directional signs for the toilets near the main entrance in the foyer



There are designated male and female toilets down the hall to the right of the Box Office.

All bathrooms have hand dryers with sensory activation.

There is a single use Accessible Toilet to the left of the Box Office and down the hall. You can access entry into the Accessible Toilet by pressing the large black button to the left of the door.



Performance Space

When the performers are ready, the ushers will announce that the 'house is open'. They will open the doors to the Grevillea Room, and you may enter at your own pace.

The performance space is in the Grevillea Room.
It is on the ground floor and to the right of the Box Office.



There is general seating for this event. An Usher can help you find a seat if you would like some help. An Usher will also be able to assist those needing wheelchair access to the Grevillea Room.

Getting to Darebin Arts Centre

Public Transport Information

Darebin Arts Centre is easily accessible by tram, train, bus and bike. Help reduce your environmental impact and rethink your need to drive.

For help planning your tram, train or bus trip use the [PTV journey planner](#).

By Tram

Route 11 (get off at stop 34, and it's a 10-minute walk)

Route 86 (get off at stop 45, and it's a 10-minute walk)



Image Descriptions: The Miller Street & St Georges Tram Stop #40 (From City). A waiting area for tram passengers and a green and white tram sign.

By Train

Mernda Line (get off at Bell Station, and it's a 5-minute walk)

[Bell Station Information](#)



Image Description: The Bell Street Train Station entrance.

By Bus

Route 513 (Get off at corner of Bell Street and St Georges Road, and it's a 2-minute walk)

Route 903 (Get off at corner of Bell Street and St Georges Road, and it's a 2-minute walk)

Bike or foot

Darebin Arts Centre is conveniently located along the St Georges Road shared path, which is ideal for cycling or walking.



Image Description: A dark coloured pillar with a green Information sign at the top. A compact-gravel walking path behind it.

By Car

Darebin Arts Centre's car park is accessible from Peter Street and St Georges Road. It has 136 unrestricted parking spaces, including 4 accessible spaces.

