

STAR

LX #4

LX #3

MIRROR BALL

LX #2

LX #1

STAR

LX #4

LX #3



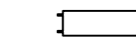

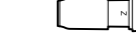

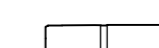


MIRROR BALL

LX #2









LX #1

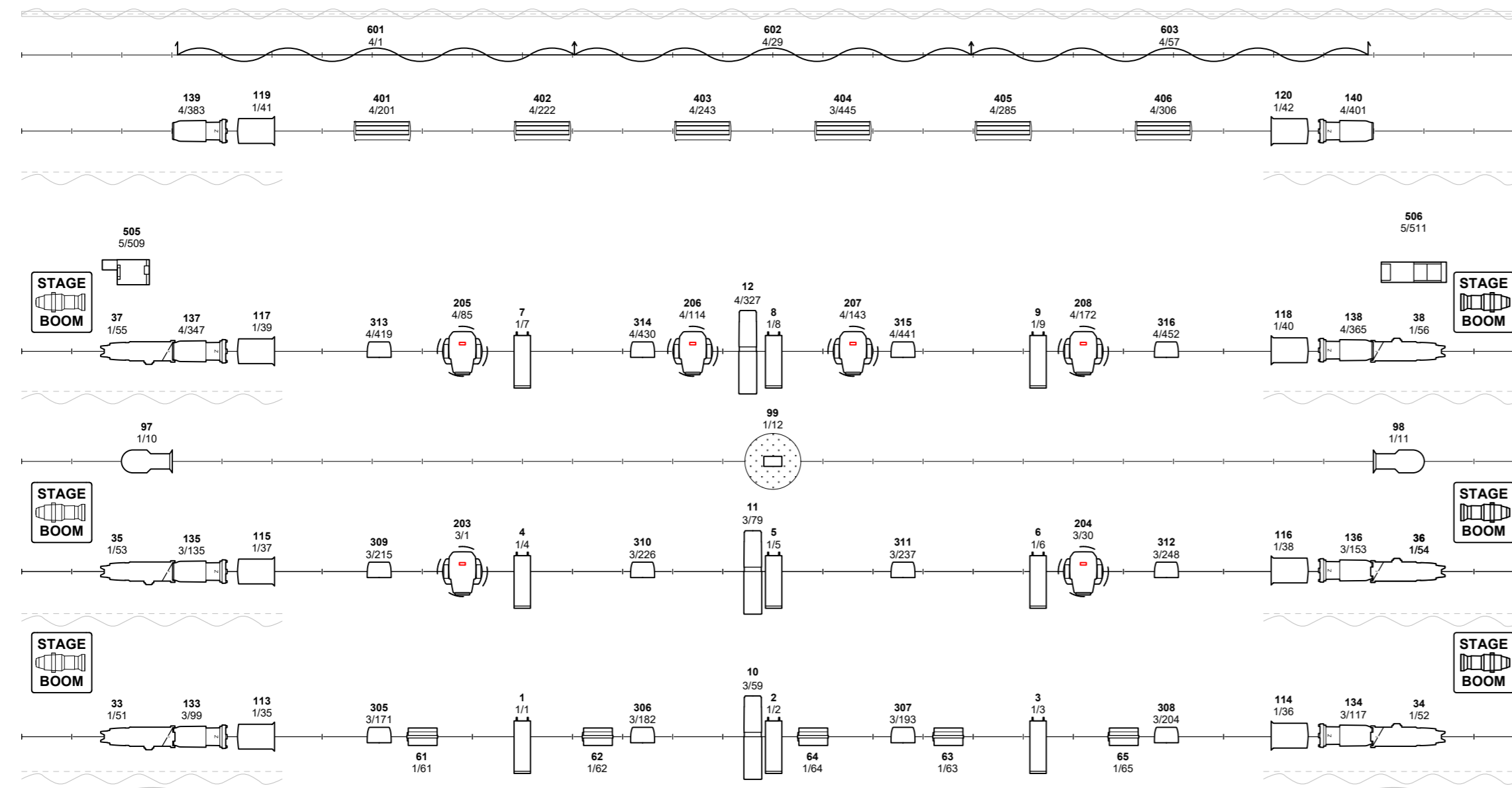
# DAC LIGHTING RIG

## Standard Rig

-  ETC Source4 Zoom 15-30°
-  Selecon Rama Fresnel 7-55°
-  Strand Prelude 16-30°
-  Selecon HUI Cyclorama
-  Chauvet Ovation Rêve F-3 10-60° RGRBAM
-  Chauvet Ovation Rêve E-3 15-30° RGRBAM
-  Infinity TS-260C7 15-35° RGCALDB
-  Showtech LED Fusion Par Q XII RGBW
-  Infinity TCYC-7 Cyclorama RGCALDB

## Optional Extras (Additional Costs Apply)

-  Chauvet Maverick MK1 Spot CMY
-  Upright Boom
  - 2 x Showtech LED FusionPAR Q XII
  - 1 x ETC Source4 Jr. Zoom 25-50°
-  Showtec Stage Blinder 2 O/W
-  Mirror Ball
-  CCT Silhouette Profile 12-23° O/W
-  Showtec Star Dream 6x4m Star Cloth RGBW
-  Look Solutions Unique 2.1 Haze Machine
-  SWEFog Duramax Intellahazer 1K8



SETTING LINE

BLINDERS (STAGE LEVEL)

FOH #1

OP PERCH UNDER BRIDGE

FOH #2

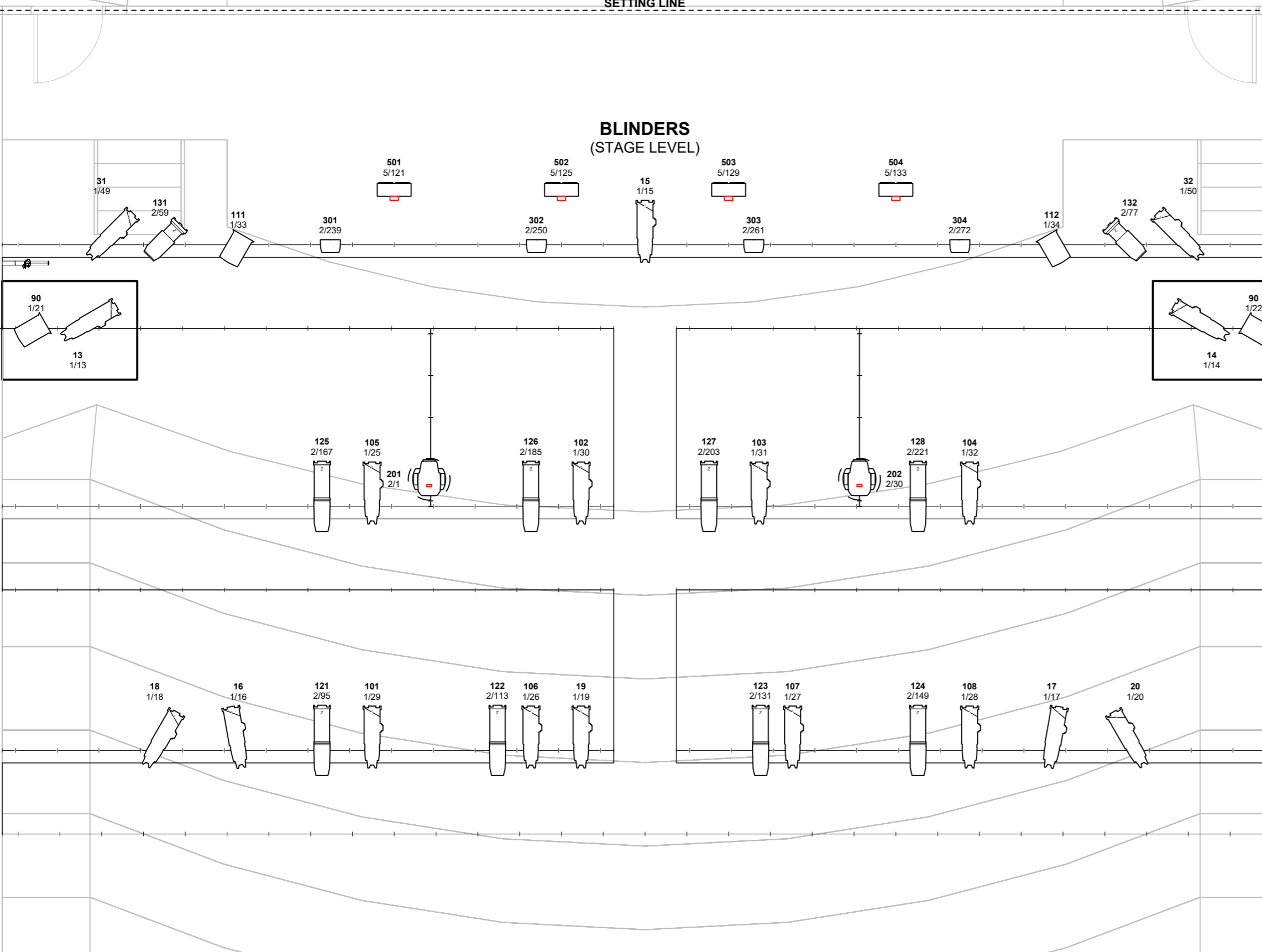
FOH #3

FOH #1

PS PERCH UNDER BRIDGE

FOH #2

FOH #3



Darebin Arts

SITE	DAREBIN ARTS CENTRE	
DWG	STANDARD LIGHTING RIG	DATE 04/2026
AUTHOR	NATHAN DUNCAN	
		SCALE 1:50 @ A2