

NORTHCOTE TOWN HALL ARTS CENTRE - FIRST FLOOR ROOM 2A+B

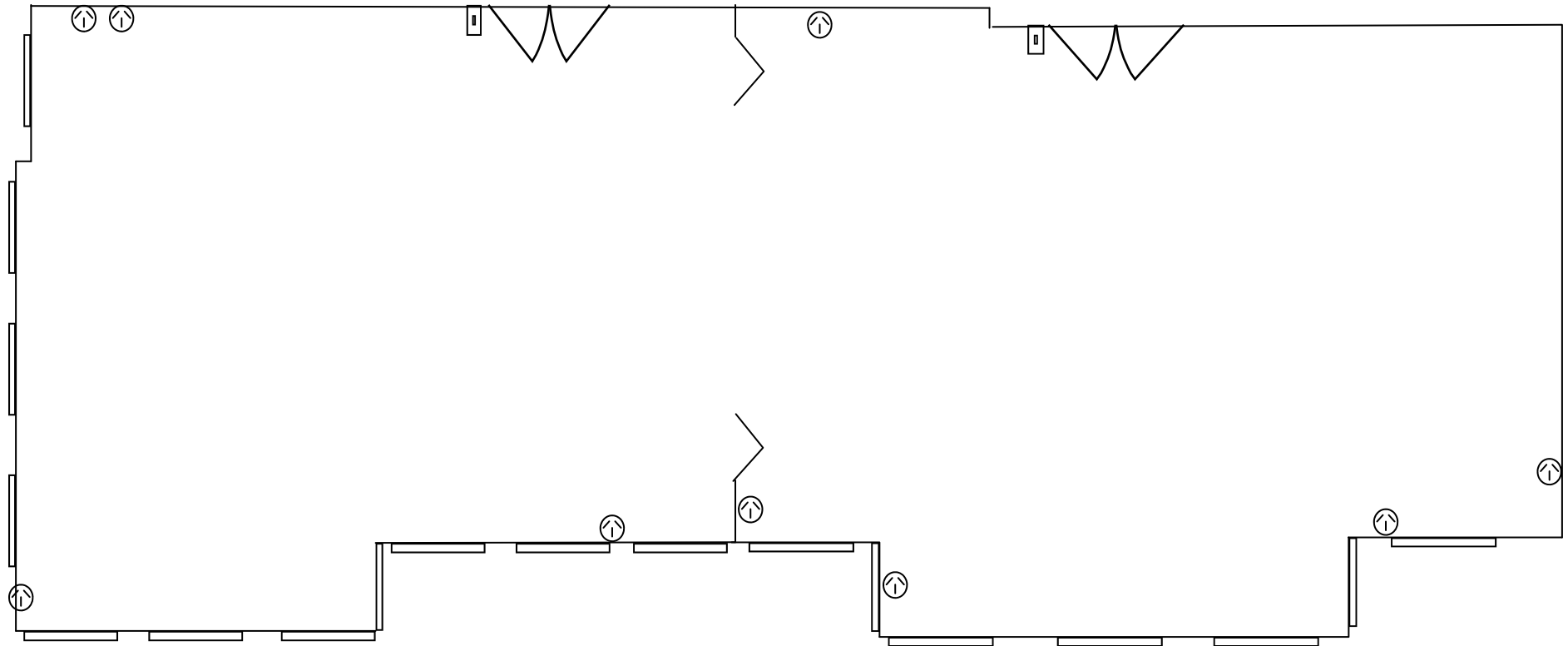
(this plan is not to scale)

LENGTH: 21.5 m

WIDTH: 5.8/5.7m

HEIGHT: 4.5m

CAPACITY: •140 cocktail function •100 banquet function •100 seated theatre
•60 boardroom
•wheel chair accessible •carpeted •toilets located on first floor



⤴ power point

□ light switch