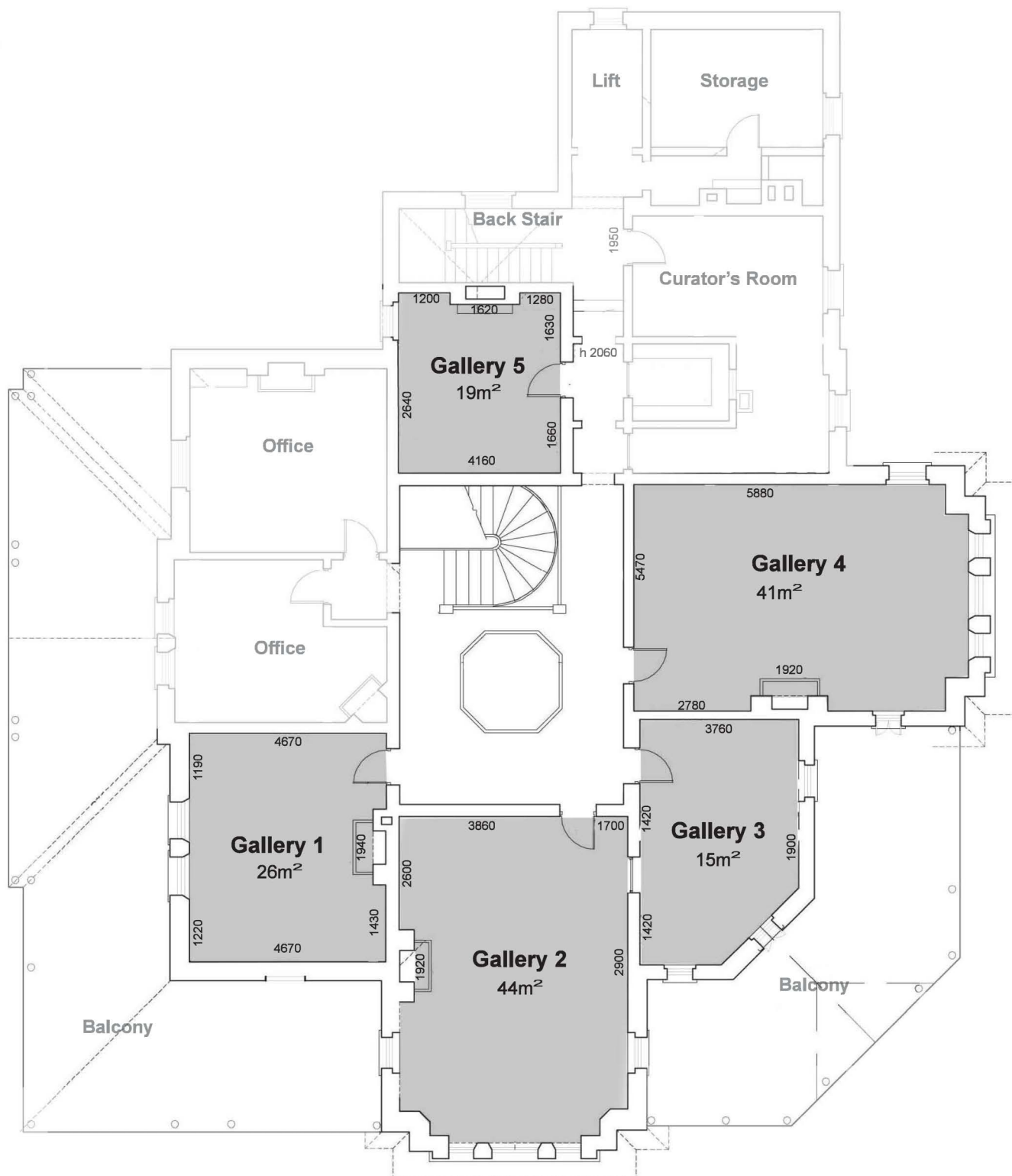


## UPSTAIRS GALLERY SPACES

Exhibitions spaces marked in grey.

**Galleries 1 - 5:** These spaces are all painted a warm white. Some rooms are expansive and light filled, some subtle and quiet and suit a huge variety of contemporary practices. All spaces can accommodate video installations. There are configurations of movable walls in some rooms, available upon request. Applications can be submitted for one or all of the spaces. If you are planning an ambitious use of the space, please discuss your project with the curator prior to submission.



## GROUNDS AND EXTERNAL SPACES

*Not shown on map*

The gardens and grounds, as well as some aspects of the external building architecture can be used and we welcome projects that are responsive to the heritage nature and history of the site, or that use the house and gardens in creative ways. Projects can incorporate sculpture, installation, ephemeral and performative projects, as well as AR and digital works and are only limited by concerns around keeping heritage infrastructure protected and suitability to the public realm. Please discuss your project with the curator prior to applying.